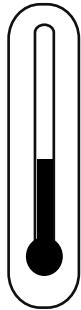




Topcoat > UltraFlex LV

STEP 01

Temperature



20-25 °C*
68-77 °F*

- ✓ Air,
- ✓ Product &
- ✓ Substrate

* Consult your Endura Representative for use outside these ranges.

STEP 02

Product Preparation

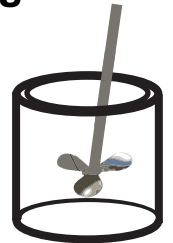


1 Part Component A
1 Part Component B

STEP 03

Mixing

2
Minutes*

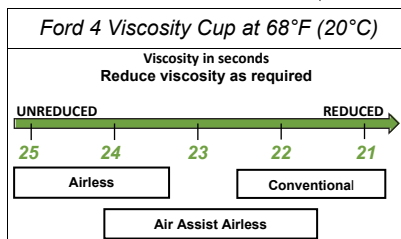


Paint must be thoroughly mixed.

* Additional mixing time is required for metallic colors and cooler temperatures.

STEP 04

Spraying Viscosity



STEP 05

Spray Gun Setup



Feed Type	Fluid Tip	Application Pressures (heel of gun)	Fluid Delivery
Siphon Feed	1.6-1.8 mm	40-50 psi	
Gravity Feed	1.3-1.4 mm	30-40 psi	
Pressure Feed	1.0-1.4 mm	50-60 psi	14-16 oz/min
Air Assist Airless	9-13 Thou	1,000-1,800 psi	
Airless	9-13 Thou	1,000-3,000 psi	

STEP 06

Application



4.0 - 8.0
mils wet



2.0 - 4.0
mils DFT

Current TDS revision 1.5