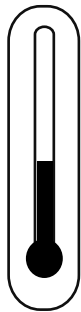


**Topcoat > Polyglass Excel d2m**

**STEP 01**

**Temperature**



**20-25 °C\***  
**68-77 °F\***

- ✓ Air,
- ✓ Product &
- ✓ Substrate

*\* Consult your Endura Representative for use outside these ranges.*

**STEP 02**

**Product Preparation**

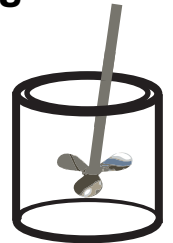


**2 Part Component A**  
**1 Part Component B**

**STEP 03**

**Mixing**

**2**  
**Minutes\***

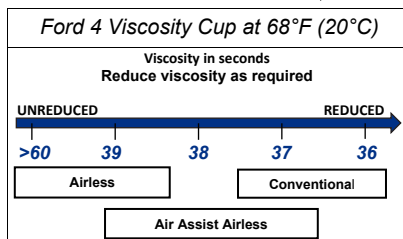


Paint must be thoroughly mixed.

*\* Additional mixing time is required in cooler temperatures.*

**STEP 04**

**Spraying Viscosity**



**STEP 05**

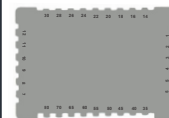
**Spray Gun Setup**



Feed Type	Fluid Tip	Application Pressures (heel of gun)	Fluid Delivery
Siphon Feed	1.6-2.0 mm	40-50 psi	
Gravity Feed	1.3-1.4 mm	30-40 psi	
Pressure Feed	1.0-1.8 mm	55-65 psi	10-14 oz/min
Air Assist Airless	11-13 Thou	1,000-1,800 psi	
Airless	11-13 Thou	1,700-3,000 psi	

**STEP 06**

**Direct to metal Application**



**7.0 - 10.0**  
**mils wet**



**4.0 - 6.0**  
**mils DFT**

*Current TDS revision 1.9*