

Topcoat > Polyglass Edge

STEP 01

Temperature



20-25 °C*
68-77 °F*

- ✓ Air,
- ✓ Product &
- ✓ Substrate

** Consult your Endura Representative for use outside these ranges.*

STEP 02

Product Preparation

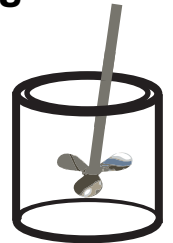


3 Part Component A
1 Part Component B

STEP 03

Mixing

2
Minutes*

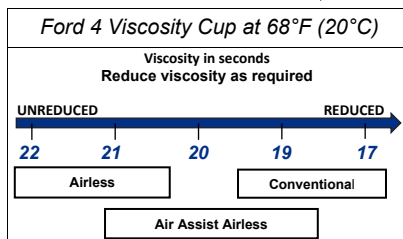


Paint must be thoroughly mixed.

** Additional mixing time is required in cooler temperatures.*

STEP 04

Spraying Viscosity



STEP 05

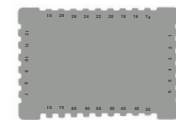
Spray Gun Setup



Feed Type	Fluid Tip	Application Pressures (heel of gun)	Fluid Delivery
Siphon Feed	1.6-1.8 mm	40-50 psi	
Gravity Feed	1.6-1.8 mm	30-40 psi	
Pressure Feed	1.0-1.8 mm	50-60 psi	10-14 oz/min
Air Assist Airless	9-17 Thou	1,000-1,800 psi	
Airless	11-13 Thou	1,700-3,000 psi	

STEP 06

Application



3.5 - 6.0
mils wet



1.5 - 2.5
mils DFT

Current TDS revision 1.6