

ENDURA PAINT

QUICK START GUIDE

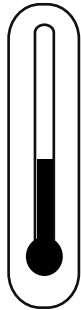


Specialty > Impact 321

UPDATE: NEW - 24 hour application window, for applying Impact 321 over Endura Primers. see TDS for more information.

STEP 01

Temperature



20-25 °C*

68-77 °F*

- ✓ Air,
- ✓ Product &
- ✓ Substrate

* Consult your Endura Representative for use outside these ranges.

STEP 02

Product Preparation

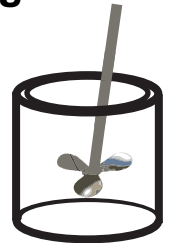


3 Part Component A
1 Part Component B

STEP 03

Mixing

2
Minutes*



Paint must be thoroughly mixed.

* Additional mixing time is required in cooler temperatures.

STEP 04

Spraying Viscosity



Important Information

Spraying viscosity and thinning will manipulate and affect the desired surface finish.

To achieve a desired spraying viscosity and desired surface finish reducing with Xylol up to 30% to achieve a smoother textured finish.

FTH0022 - Xylol

STEP 05

Spray Gun Setup



Feed Type	Fluid Tip	Application Pressures (heel of gun)	Fluid Delivery
Shutz Gun		50-60 psi	

STEP 06

Application



29 - 147
mils wet



20 - 100
mils DFT

Current TDS revision 2.1 & 1.4 (neutral)

Want to learn more?

www.endurapaint.com

Consult the Technical Data Sheet for complete instructions.

For technical assistance call: **1-800-661-9930**