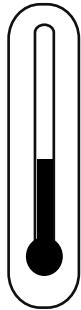




### Topcoat > EX-2C Low VOC

#### STEP 01

##### Temperature



**20-25 °C\***  
**68-77 °F\***

- ✓ Air,
- ✓ Product &
- ✓ Substrate

\* Consult your Endura Representative for use outside these ranges.

#### STEP 02

##### Product Preparation

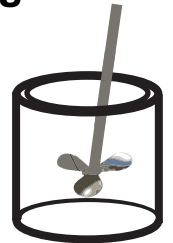


**1 Part Component A**  
**1 Part Component B**

#### STEP 03

##### Mixing

**2**  
**Minutes\***

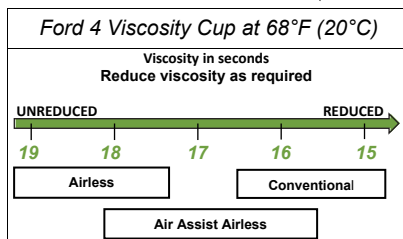


Paint must be thoroughly mixed.

\* Additional mixing time is required for metallic colors and cooler temperatures.

#### STEP 04

##### Spraying Viscosity



#### STEP 05

##### Spray Gun Setup



Feed Type	Fluid Tip	Application Pressures (heel of gun)	Fluid Delivery
Siphon Feed	1.6-1.8 mm	40-50 psi	
Gravity Feed	1.3-1.8 mm	30-40 psi	
Pressure Feed	1.0-1.4 mm	50-60 psi	12-14 oz/min
Air Assist Airless	9-13 Thou	1,000-1,800 psi	
Airless	9-13 Thou	1,000-3,000 psi	

#### STEP 06

##### Application



**3.5 - 5.5**  
**mils wet**



**1.5 - 2.5**  
**mils DFT**

Current TDS revision 2.0

Want to learn more?

[www.endurapaint.com](http://www.endurapaint.com)

Consult the Technical Data Sheet for complete instructions.

For technical assistance call: **1-800-661-9930**