

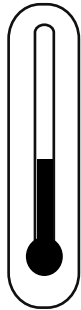


Topcoat > EX-2C Low VOC A.C.T

EX-2C A.C.T MUST be Cleared

STEP 01

Temperature



20-25 °C*
68-77 °F*

- ✓ Air,
- ✓ Product &
- ✓ Substrate

* Consult your Endura Representative for use outside these ranges.

STEP 02

Product Preparation



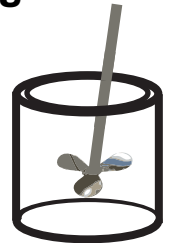
1 Part Component A
1 Part Component B

SuperCat II is required to achieve TDS tape times see TDS for full details

STEP 03

Mixing

2
Minutes*

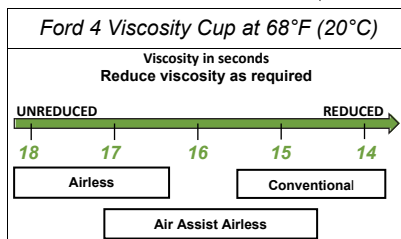


Paint must be thoroughly mixed.

* Additional mixing time is required for metallic colors and cooler temperatures.

STEP 04

Spraying Viscosity



STEP 05

Spray Gun Setup



Feed Type	Fluid Tip	Application Pressures (heel of gun)	Fluid Delivery
Siphon Feed	1.6-1.8 mm	40-50 psi	
Gravity Feed	1.3-1.4 mm	30-40 psi	
Pressure Feed	1.0-1.4 mm	50-60 psi	12-14 oz/min
Air Assist Airless	9-13 Thou	1,000-1,800 psi	
Airless	9-13 Thou	1,000-3,000 psi	

Application



3.5 - 6.0
mils wet



1.5 - 2.5
mils DFT

Current TDS revision 1.8