

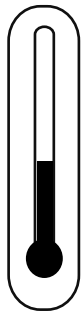
# ENDURA PAINT

## QUICK START GUIDE

### Topcoat > EX-2C

#### STEP 01

##### Temperature



**20-25 °C\***  
**68-77 °F\***

- ✓ Air,
- ✓ Product &
- ✓ Substrate

\* Consult your Endura Representative for use outside these ranges.

#### STEP 02

##### Product Preparation



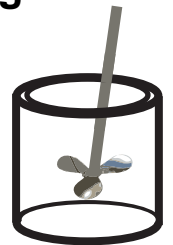
**1 Part Component A**  
**1 Part Component B\***

\*Other Bs are available for varying ambient conditions and application requirements.

#### STEP 03

##### Mixing

**2**  
**Minutes\***



Paint must be thoroughly mixed.

\* Additional mixing time is required for metallic colors and cooler temperatures.

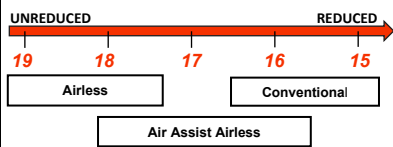
#### STEP 04

##### Spraying Viscosity



Ford 4 Viscosity Cup at 68°F (20°C)

Viscosity in seconds  
Reduce viscosity as required



#### STEP 05

##### Spray Gun Setup



| Feed Type          | Fluid Tip  | Application Pressures (heel of gun) | Fluid Delivery |
|--------------------|------------|-------------------------------------|----------------|
| Siphon Feed        | 1.6-1.8 mm | 40-50 psi                           |                |
| Gravity Feed       | 1.3-1.8 mm | 30-40 psi                           |                |
| Pressure Feed      | 1.0-1.4 mm | 50-60 psi                           | 10-14 oz/min   |
| Air Assist Airless | 9-13 Thou  | 1,000-1,800 psi                     |                |
| Airless            | 11-13 Thou | 1,700-3,000 psi                     |                |

#### STEP 06

##### Application



**3.5 - 5.0**  
**mils wet**



**1.5 - 2.5**  
**mils DFT**

Current TDS revision 2.0

Want to learn more?

[www.endurapaint.com](http://www.endurapaint.com)

Consult the Technical Data Sheet for complete instructions.

For technical assistance call: **1-800-661-9930**