

### Topcoat > EX-2C Clear 100

#### STEP 01

##### Temperature



**20-25 °C\***

**68-77 °F\***

- ✓ Air,
- ✓ Product &
- ✓ Substrate

\* Consult your Endura Representative for use outside these ranges.

#### STEP 02

##### Product Preparation

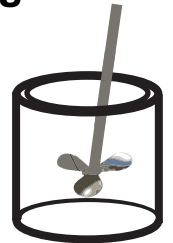


- 1 Part Component A**
- 1 Part Component B**

#### STEP 03

##### Mixing

**2  
Minutes\***



Paint must be thoroughly mixed.

\* Additional mixing time is required for cooler temperatures.

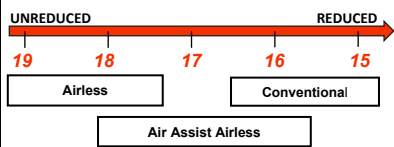
#### STEP 04

##### Spraying Viscosity



Ford 4 Viscosity Cup at 68°F (20°C)

Viscosity in seconds  
Reduce viscosity as required



#### STEP 05

##### Spray Gun Setup



Feed Type	Fluid Tip	Application Pressures (heel of gun)	Fluid Delivery
Siphon Feed	1.6-1.8 mm	40-50 psi	
Gravity Feed	1.3-1.4 mm	30-40 psi	
Pressure Feed	1.0-1.4 mm	50-60 psi	10-14 oz/min
Air Assist Airless	9-13 Thou	1,000-1,800 psi	
Airless	11-13 Thou	1,700-3,000 psi	

#### STEP 06

##### Application



**2.5 - 5.0  
mils wet**



**1.0 - 2.0  
mils DFT**

Current TDS revision 1.8

Want to learn more?

[www.endurapaint.com](http://www.endurapaint.com)

Consult the Technical Data Sheet for complete instructions.

For technical assistance call: **1-800-661-9930**