

Specialty > SlipStop

STEP 01

Temperature



20-25 °C*

68-77 °F*

- ✓ Air,
- ✓ Product &
- ✓ Substrate

* Consult your Endura Representative for use outside these ranges.

STEP 02

Product Preparation

- 2 Part Component A**
- 2 Part Component C***
- 1 Part Component B**

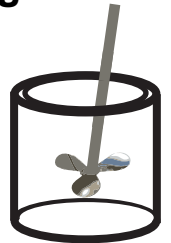
**The resin container within the component C container must be added to the crumb rubber within the component C container at least 4 hours prior to mixing and application of the product.*

**The final color of the SlipStop is dependant on the EX-2C Component A color chosen.*

STEP 03

Mixing

**2
Minutes***



Paint must be thoroughly mixed.

** Additional mixing time is required for metallic colors and cooler temperatures.*

STEP 04

Spraying Viscosity



N/A

STEP 05

Spray Gun Setup

N/A

Product is applied using a roller
A SlipStop roller sleeve is supplied with the kit.

STEP 06

Application

Recommended Film Thickness

Coverage is approximately
**60- 120sq. ft.
per 2.5-gallon kit**

Current TDS revision 1.8