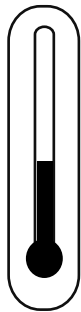


Primer > Intermix 2:1

STEP 01

Temperature



20-25 °C*

68-77 °F*

- ✓ Air,
- ✓ Product &
- ✓ Substrate

* Consult your Endura Representative for use outside these ranges.

STEP 02

Product Preparation

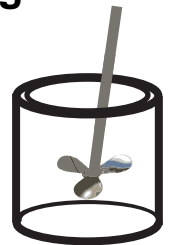


2 Part Component A
1 Part Component B

STEP 03

Mixing

2
Minutes*



Paint must be thoroughly mixed.

* Additional mixing time is required in cooler temperatures.

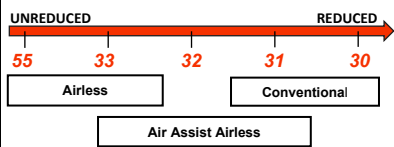
STEP 04

Spraying Viscosity



Ford 4 Viscosity Cup at 68°F (20°C)

Viscosity in seconds
Reduce viscosity as required



STEP 05

Spray Gun Setup



Feed Type	Fluid Tip	Application Pressures (heel of gun)	Fluid Delivery
Siphon Feed	1.6-1.8 mm	40-50 psi	
Gravity Feed	1.6-1.8 mm	30-40 psi	
Pressure Feed	1.4-1.8 mm	50-60 psi	10-14 oz/min
Air Assist Airless	9-15 Thou	1,000-1,800 psi	
Airless	9-13 Thou	1,700-3,000 psi	

STEP 06

Application



4.5 - 8.5
mils wet



2.0 - 4.0
mils DFT

Current TDS revision 1.4